



GMT MONTHLY MEMBERSHIP PROGRESS REPORT

Results as of: 4/30/2019

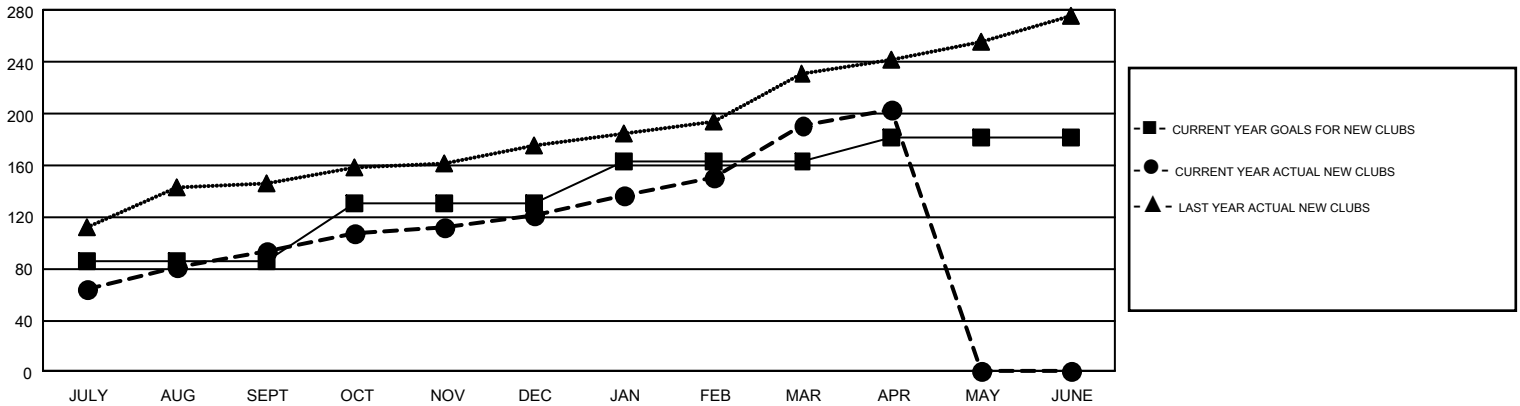
GMT Constitutional Area 6, Group A

GMT: SWADESH RANJAN SAHA

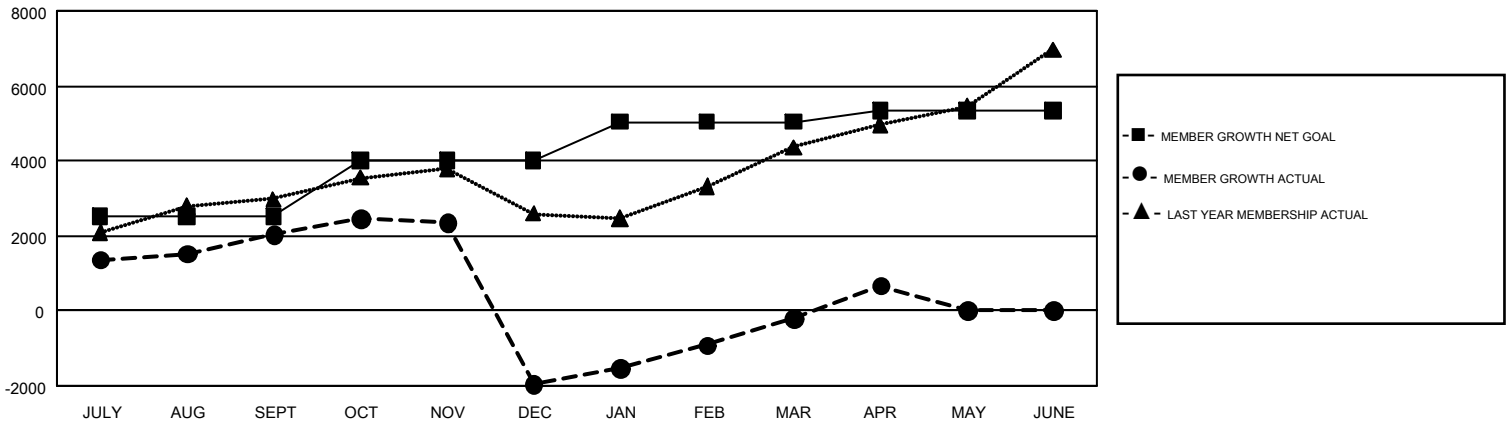
REPORT DOES NOT INCLUDE CLUBS IN UNDISTRICTED AREAS.

Clubs				Members			
RESULTS FOR 2018-2019				RESULTS FOR 2018-2019			
QUARTER	NEW CLUB GOAL	NEW CLUBS	DROPPED CLUBS	QUARTER	MEMBER GROWTH NET GOAL	MEMBER GROWTH ACTUAL	DROPPED MEMBERS ACTUAL (including transfers)
JULY/AUG/SEPT	86	94	22	JULY/AUG/SEPT	2,525	3,850	1,649
OCT/NOV/DEC	45	27	106	OCT/NOV/DEC	1,470	2,240	6,139
JAN/FEB/MAR	32	70	19	JAN/FEB/MAR	1,044	3,123	951
APR/MAY/JUNE	18	12	0	APR/MAY/JUNE	300	1,262	335

GOALS AND ACTUAL NEW CLUBS CUMULATIVE



GOALS AND ACTUAL MEMBERS CUMULATIVE



DROPPED CLUBS: 147	984 CLUBS OF 1,866 ADDED 1 OR MORE NEW MEMBERS	GENDER DISTRIBUTION MALE 42,813 (72.69%) FEMALE 16,087 (27.31%)
DROPPED MEMBERS DECEASED 105 CLUB CANCELLED 4,089 OTHER 4,881 <hr/> TOTAL 9,075	CLICK HERE FOR CUMULATIVE MEMBERSHIP DATA	TOTAL FAMILY UNIT MEMBERS 26,817 FAMILY MEMBERS PAYING HALF DUES 16,426